



# THIS SUMMER



Disney

## DESCENDANTS

**JULY**

**23RD & 24TH**

VISIT: [SHORELINETHEATRECOMPANY.COM](http://SHORELINETHEATRECOMPANY.COM)



# PLAYBILL®

Shoreline Theatre Company  
Cathyann Roding Auditorium

**SHORELINE**  
THEATRE COMPANY

# RENT

JUNE 19TH, 20TH, 26TH & 27TH  
AT 7:00 PM

MEASURE YOUR LIFE  
IN LOVE

[SHORELINETHEATRECOMPANY.COM](http://SHORELINETHEATRECOMPANY.COM)

## FEATURED SPONSOR



**Thank you for your constant  
support of the arts in our  
community!!!**

**[www.BranfordCommunityFoundation.org](http://www.BranfordCommunityFoundation.org)**

## ACKNOWLEDGEMENTS

### **We would like to thank...**

Dr. Tranberg

Branford Board of Education

Branford High School Custodial Staff

Brendan Leddy

Carmel O'Grady Sheehan

Tags On Main

TYCO

Studio One Branford

Ted Sod

Landmark Community Theatre

Branford Parks and Recreation Department Security

### **Branford Parks & Recreation Department**

Director - Dale Izzo

Assistant Director - Nally Sahin

Program Supervisor - Victor Amatori Jr.

Arts, Culture & Special Events Coordinator - Colin Sheehan

Program Coordinator - Ricky DiRago

Administrative Assistant - Kelly Gesuero

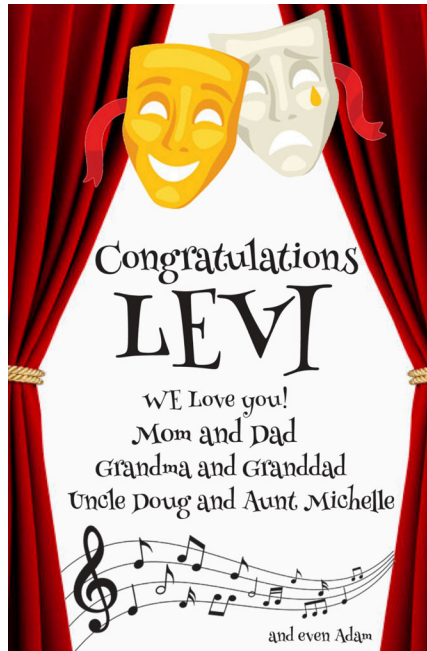




## ADS

pearl  
wine bar  
Come Try Our New Full Menu

1140 Main Street  
Branford, CT  
203-208-1329



## THANK YOU TO OUR BRONZE SPONSORS

**The Ospina Family**

**Joe & Debbie Copes**

**Branford Cue & Brew**

**The Bagel Boutique**

**Cathyann Roding**

## Shoreline Theatre Company

PRESENTS

# RENT

**Book, Music and Lyrics by  
Jonathan Larson**

Musical Arrangments by  
Steve Skinner

Original Concept/Additional Lyrics by  
Billy Aronson

Music Supervision & Additional  
Arrangements  
Tim Weil

Dramaturg  
Lynn Thomson

with

Alexandra Hernandez  
Nancy Madonna  
Destiny Mea

Tiernan Michael Shea  
Lucas Dylan  
Scott A. Towers

Kelsey Mulligan  
Jacqueline Mate  
Epifany Meeks

Musical Director  
Mike Martone Jr

Director  
Chris Lemieux

Choreographer  
Paola Rarick

Assistant Director  
Ariel Cobden

Technical Director  
Adam Jackson

Stage Manager  
Katie Spaulding

Sound Designer  
Brendan Krom

Co Founders and Artistic Directors  
Mike Martone Jr. and Colin Sheehan

Produced by  
Branford Parks and Recreation Department

Rent  
Is presented through special arrangement with Music Theatre International (MTI).  
All authorized performance materials are also supplied by MTI.  
[www.mtishows.com](http://www.mtishows.com)

## PRODUCTION NOTE

*"In these dangerous times, where it seems the world is ripping apart at the seams, we can all learn how to survive from those who stare death squarely in the face every day, and we should reach out to each other and bond as a community, rather than hide from the terrors of life at the end of the millennium."* — **Jonathan Larson**

In the early 1990s, composer Jonathan Larson set out to reinvent musical theater for a new generation. Drawing inspiration from Puccini's *La Bohème*—a story of struggling artists in 19th-century Paris during a tuberculosis outbreak—Larson reimagined it in New York City at the height of the AIDS crisis. The result was *Rent*, a raw and heartfelt rock opera that gave voice to the communities most devastated by the epidemic: artists, queer people, and the marginalized.

Tragically, Larson never saw the impact of his masterpiece. He died suddenly of an undiagnosed aortic dissection the night before *Rent*'s first Off-Broadway performance. But his vision struck a chord so powerful that *Rent* moved swiftly to Broadway, changing the landscape of musical theater and paving the way for works like *Spring Awakening*, *Next to Normal*, and *Hamilton*—all shows that echo *Rent*'s bold spirit and emotional honesty.

At its heart, *Rent* is about community—how it endures, resists, and heals in the face of unimaginable loss. In one of the show's most poignant moments, a group of people living with HIV gather, not to mourn, but to affirm: they may not control their fate, but they can choose to live fully — *"there's only now, there's only this... no day but today."*

That message is as urgent now as it was then. While enormous progress has been made in the fight against HIV/AIDS, that progress remains fragile. On May 30, 2025, it was reported that the U.S. government would be terminating critical funding for HIV vaccine research—a stark reminder that the fight is not over.

*Rent* reminds us to turn toward each other in times of fear. To build communities rooted in empathy. To speak out against injustice. And to defend the lives and legacies of those we love—friends, family, and chosen family alike.

This show is not just a piece of history. It is a call to action. A love letter to artists and those who feel pushed aside. A reminder that we all have the power to create a world where love and dignity endure.

*"Measure your life in love."*

### KEEP IN TOUCH WITH US!

Sign up for our mailing list at [ShorelineTheatreCompany.com](https://ShorelineTheatreCompany.com)

Visit [ShorelineTheatreCompany.com](https://ShorelineTheatreCompany.com) for more

Follow us on social media

Facebook @Shoreline Theatre Company  
Instagram @shorelinetheatrecompany

## ADS



### Branford Rotary




**Come help us help others**

<b>BRAFFLE</b>	<b>Branford Festival</b>
<b>Thanksgiving 5k</b>	<b>Veterans Luncheon</b>
<b>Senior Holiday Dinner</b>	<b>CT Hospice Trees</b>
<b>Scholarships</b>	<b>Take-a-Vet Fishing</b>
<b>Feed Our Neighbors</b>	<b>And Happy Hours!</b>

**BranfordRotary.org**

### Ocean Dental Group



*"Just brush the ones you want to keep!"*

**Norman F. Dahl III, D.D.S., P.C.**  
**Elana Celliers, D.M.D.**  
904 West Main Street Suite A • Branford, CT 06405  
203.483.8806  
[www.OceanDentalCT.com](http://www.OceanDentalCT.com)

### SAMANTHA SMITH PRODUCTIONS

★★★

**We do the work, you take the credit.**

Founded in 2003, Samantha Smith Productions is a full service, boutique event firm. Event planning is only the beginning of our story...

- ★ We curate and design.  
We carefully and thoughtfully design creative events that are fresh, original, clever, bold, and well-branded.
- ★ We create experiences.  
We transform your vision and information to bring content to life through relevant and memorable experiences. We gather, inspire, motivate, connect, engage, and energize people to "think, feel, and do" great things in the future. Our events are fun, too!
- ★ We flawlessly deliver.  
We aim to deliver flawless events. The devil is in the details, and we are "Type A" meticulous perfectionists when it comes to detailed event execution.

"We deliver on our promise: we do the work, you take the credit. Happy guests. Happy clients. Period."

★★★



### ASHLEY'S ICE CREAM™

**1016 Main Street  
Branford, CT**

203-481-5558

Monday - Sunday  
12pm to 10pm



## ADS



**D C Creations**

184 Maple Street  
Branford CT 06405

**David Campanelli**  
Owner

dccreationshairsalon@gmail.com

203-483-7126  
203-859-0876 cell



**P/K**  
**PRO-KLEAN**  
DAMAGE RESTORATION SINCE 1986

**Restoration Services**

- FIRE AND SMOKE DAMAGE
- WATER DAMAGE
- WIND & STORM DAMAGE
- MOLD REMEDIATION
- REBUILD/RESTORATION
- BIOHAZARD & TRAUMA
- LARGE LOSS
- ICE DAMS
- ABATEMENT
- EMERGENCY SERVICES

CALL US FOR FREE QUOTE  
**833.213.7972**

FOLLOW US   Pro-Klean Cleaning & Restoration Services, Inc.

A TRUSTED NAME  
IN RESIDENTIAL AND COMMERCIAL  
RESTORATION SINCE 1986

ACCREDITED BUSINESS

## PRODUCTION NOTE

### DEDICATION

It takes a community to tell a story—and *Rent* is, at its heart, a celebration of just that.

This year, Shoreline Theatre Company welcomed a record number of actors from all walks of life.

What began eight years ago as a small Branford-based company has grown into a vibrant community of artists from across the shoreline. It feels only right that this production isn't dedicated to a single person, but to everyone who has believed in and supported STC's mission: to bring people together through the transformative power of theater.

We extend deep gratitude to Alex Palluzzi Jr., former Director of Branford Parks and Recreation, whose belief in our vision helped make STC what it is today. His unwavering support gave us a true home in Branford and the opportunity to grow into an essential part of its cultural life. Though

Alex has now retired from his role with Parks and Rec, we are thrilled to see him continuing to champion the arts in his new position on the Board of Education. This show is dedicated in part to Alex—for his generosity, leadership, and enduring belief in what community theater can be.

We also dedicate this production to the arts educators in our community. Their work too often goes unrecognized, yet their impact is immeasurable. Through their dedication, they nurture creativity, empathy, and self-expression in the next generation of artists. Their classrooms are where young voices find courage, and where the seeds of productions like this one are first planted.

Finally, we honor the victims and survivors of the HIV/AIDS crisis. At the height of the epidemic, an entire generation of human beings and artists was lost—voices silenced, stories left untold. We were deeply moved to have Ted Sod, a professional actor, member of the LGBTQ+ community, and survivor of the AIDS crisis, speak with our cast about the profound loss and enduring lessons of that time. His testimony reminded us why *Rent* still matters.

To all who have made this show possible—from founding advocates to first-time performers—thank you for reminding us what community means. This story belongs to all of us.

May it inspire us to keep creating, keep connecting, and keep singing, even in the face of uncertainty.

There is no day... BUT TODAY!!!



## SONGS

### ACT I

Tune Up A .....	Mark, Roger
Voicemail #1 .....	Mark's Mother
Tune Up B .....	Mark, Roger, Collins, Benny
Rent .....	Mark, Adam, Mimi, Collins, Angel, Maureen, Joanne, Benny, Company
You Okay, Honey? .....	Angel, Collins
Tune Up (Reprise) .....	Mark, Roger,
One Song Glory .....	Roger
Light My Candle .....	Roger, Mimi
Voicemail #2 .....	Mr. Jefferson, Mrs. Jefferson
Today For You .....	Collins, Mark, Roger, Angel
You'll See .....	Benny, Roger, Mark, Angel, Collins
Tango: Maureen .....	Mark, Joanne
Support Group .....	Angel, Collins, Mark, Roger, Steve, Gordon, Paul, Company
Out Tonight .....	Mimi
Another Day .....	Roger, Mimi, Company
Will I? .....	Steve, Angel, Collins, Mark, Roger, Company
On the Street .....	Mark, Angel, Company
Santa Fe .....	Angel, Collins, Mark
I'll Cover You .....	Angel, Collins
We're Okay .....	Joanne
Christmas Bells .....	Collins, Angel, Mark, Roger, Mimi, Benny, Maureen, Company
Over the Moon .....	Maureen
La Vie Boheme/I Should Tell You .....	Mark, Roger, Mimi, Collins, Angel, Maureen, Joanne, Benny, Company

### ACT II

Seasons of Love .....	Mark, Roger, Mimi, Collins, Angel, Maureen, Joanne, Benny, Soloists
Happy New Year .....	Mimi, Roger, Mark, Maureen, Joanne, Collins, Angel

## ADS



**CHARLES CONTI**  
Realtor®


(203) 640-3667

charles.conti@cbmoves.com  
charlesconti.sites.cbmoxi.com

1024 Main St  
Branford, CT 06405

 **COLDWELL BANKER** | REALTY

Owned by a subsidiary of Anywhere Advisors LLC



**Muscle and Joint  
Performance Chiropractic  
& Physical Therapy**

**Armand Gagliardi, D.C., ART**

5 S. Main St., Ste. 511, Branford, Connecticut 06405  
Phone: 203-208-0972 Fax: 203-208-1455  
agagliardi@scmjpc.com www.branfordchiropractor.com



## ADS

**Gerald Company LLC**  
*Painting and Handyman Services*  
**203-521-4896**  
*Proudly Serving Connecticut Residents*  
*For over 45 years!*

## LUCAS DYLAN

WOULD LIKE TO THANK THE  
 FOLLOWING SUPPORTERS AND SPONSORS

MOM, JOE, PIPER, JULIA & HANNA

BOOTS AND BANANAS

GRAMMY & POP

SAMANTHA SMITH

AMY O'BRIEN

JULIE REDL

JEANETTE BURKE

LAURA REY

WESTREP STAGE

SHORELINE THEATRE COMPANY & THE ENTIRE CAST AND  
 CREATIVE TEAM OF RENT

## SONGS

### ACT II (continued)

Voicemail #3	Mrs. Cohen, Alexi Darling
Voicemail #4	Alexi Darling
Happy New Year B	Maureen, Joanne, Mark, Benny, Roger, Mimi, Angel, Collins
Take Me or Leave Me	Maureen, Joanne
Seasons of Love B	Mark, Roger, Mimi, Collins, Angel, Maureen, Joanne, Benny, Company
Without You	Mimi, Roger
Voicemail #5	Mimi's Mother, Mrs. Jefferson, Mrs. Cohen
I'll Cover You (reprise)	Collins, Joanne, Mark, Roger, Maureen, Mimi, Benny
Halloween	Mark
Goodbye Love	Mimi, Roger, Benny, Maureen, Joanne, Collins
What You Own	Mark, Roger
Voicemail #6	Roger's Mother, Mimi's Mother, Mark's Mother, Mr. Jefferson
Finale A	Mark, Roger, Collins, Maureen, Mimi, Joanne
Your Eyes	Roger
Finale B	Company



## CAST

### Cast Members

Roger Davis	Tiernan Michael Shea
Mark Cohen	Lucas Dylan
Tom Collins	Scott A. Towers
Benjamin Coffin III	Chris Lemieux
Joanne Jefferson	Kelsey Mulligan
Joanne Jefferson	Alexandra Hernandez
Mimi Marquez	Destiny Mea
Mimi Marquez	Epifany Meeks
Maureen Johnson	Nancy Madonna
Maureen Johnson	Jacqueline Mate
Angel Schunard	Benjamin Ospina
Mr. Jefferson, Pastor, Homeless Man 1	Jon Firman
Mrs. Jefferson, Vendor #2	Judy Bannon
Roger's Mother	Sarah Conti
Mrs. Cohen	Mandy Sellers
Mimi's Mother, Homeless Person 5, Blanket Person	Marissa S. Nassar
Alexi Darling, Support Group Member	Jana O'Donnell
The Man	Matthew Romo
Thug, Police Officer, Homeless Man 4, Mr. Gray	David Standrowicz
Thug, Police Officer	Zoe Johnson
Vendor #1	Tori Freeman
Squeegieman	Alex Lenox
Coat Vendor	Lillian Palluzzi
Homeless Man 2, Support Group Member	Nicholas Schettino
Homeless Man 3, Support Group Member	Levi Burger
Gordon, Homeless Person 6	Casey Hallock
Homeless Person 7	Laura Melillo
Sue, Restaurant Person	Shay Barrett

## ADS

### Mase Construction & Consulting

**Our Services :**

- Specialize in Insurance repairs & restoration
- Full service remodeling
- Roofing & Gutters
- Consulting

Financing available

**MASE CONSTRUCTION & CONSULTING**  
203-815-6608

**Licensed & insured**

[vin@maseconstruction.com](mailto:vin@maseconstruction.com)

**Katie Hainsworth Westrin**  
[Katie.Westrin@raveis.com](mailto:Katie.Westrin@raveis.com)  
 c: 203.509.3619



**HAINSWORTH**  
 Team at William Raveis Real Estate

*Success you can count on!*

**Hainsworth.raveis.com**  
 1080 Main Street · Branford · CT 06405



## ADS



**Lighthouse Counseling and Intervention**  
**Jason Bannon, NCAC1, LAP-C**

605 Washington Ave.  
 North Haven, CT 06473

jason.bannon175@gmail.com

203-430-5317



**stony creek market**  
 breakfast & lunch  
*open daily year round*

**stony creek pizza**  
*seasonal - check website for  
 current hours*

178 thimble island rd  
 stony creek • branford  
 203-488-0145  
[www.stonycreekmarket.com](http://www.stonycreekmarket.com)



## CAST

### Cast Members (continued)

Paul .....	Tim Fraedrich
Steve .....	Matthew Law
Ali .....	Kaye Desanti
Pam .....	Alexis Brown
Support Group Member .....	Emma Parker
Support Group Member, A Girl .....	Bella DeSorbo
Support Group Member .....	Italia Bruno
Support Group Member .....	Jade Bocciarelli

### Orchestra

Conductor .....	Mike Martone Jr.
Keyboard 1 .....	Nick Stanford
Drums .....	Nate Dobas
Guitar 1 .....	Randy Newbury
Guitar 2 .....	Zach Rosenberg
Bass .....	Jordan Brint

**SHORELINE**  
**THEATRE COMPANY**



## TEAM

### Crew Members

Director .....	Chris Lemieux
Musical Director, Set Designer, Co-Founder/Artistic Director .....	Mike Martone Jr.
Choreographer .....	Paola Rarick
Technical Director/Lighting Designer .....	Adam Jackson
Assistant Director .....	Ariel Cobden
Stage Manager .....	Katie Spaulding
Sound Designer .....	Brendan Krom
Co-Founder/Artistic Director .....	Colin Sheehan
Assistant Stage Manager .....	Matthew Lenox
Assistant Choreographer .....	Madison Cook
Costume Lead .....	Dina DeSorbo
Deck Chief .....	Matthew Lenox
Prop Manager .....	Halle Peterson
Photography .....	Samantha Coleman

### Crews

Costumes .....	Dina DeSorbo, Jenn Purse, Brown
Technical Crew .....	Jenna Medina, Mason Marchitto, Finn Earnshaw, Helen Abbott, Nate Frohlich, Sibel Ilijazi
Stage Crew .....	Nate Benson, Penelope Benson, Max Perez, Ayla Omeragic

## ADS






**A PAINT YOUR OWN POTTERY STUDIO**

**Come paint something beautiful!**

Have your next birthday party, baby shower, corporate event or social get together at Fired Up! Ask an associate for details. Walk-ins welcome. BYOB!

1060 Main St. Branford, CT • 203-481-1015

[www.FiredUpBranford.com](http://www.FiredUpBranford.com) • [FiredUpBranfordCT@gmail.com](mailto:FiredUpBranfordCT@gmail.com)

[@BranfordFiredUp](https://www.facebook.com/FiredUpBranford) • [Facebook.com/FiredUpBranford](https://www.facebook.com/FiredUpBranford)

The 25<sup>th</sup> Annual Putnam County



# SPELLING BEE


"A H-I-L-A-R-I-O-U-S must-see!"

## JUNE 20-29

AT THE WESTMINSTER CENTENNIAL THEATER

ON SALE NOW! [WWW.THEATREGUILDSIMSBURY.ORG/TICKETS](http://WWW.THEATREGUILDSIMSBURY.ORG/TICKETS)





## ADS



"Branford Counseling & Community Services ("BCCS") is a municipally-funded behavioral health and social services agency, providing services to Branford residents, both adults and children.

**342 Harbor Street, Branford CT 06405**

**Phone: 203-481-4248**

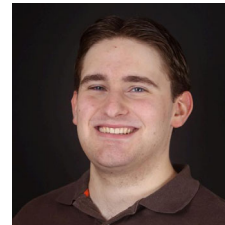
## WHO'S WHO



### **Tiernan Michael Shea**

*as Roger Davis*

Tiernan feels truly blessed to be reprising his dream role of Roger Davis! He feels so grateful to be able to perform once again with his partner, and forever 'Mimi', Destiny. Other past roles include Brad in *The Rocky Horror Show* (LTM/CDT), Charlie Price in *Kinky Boots* (CCT), Roger in *RENT* (WRT), Hanschen in *Spring Awakening* (KETG) and Warner in *Legally Blonde* (LTM). A huge shout out to his family and chosen family "for coming to literally every show I'm in!". Theater is family, theater is inclusive. "Thank you STC. Thank you ALL for coming and supporting us!"



### **Lucas Dylan**

*as Mark Cohen*

Lucas is an incoming junior B.F.A. Musical Theatre student at Western Connecticut State University (WCSU). Previous STC credits include *Footloose* and *Peter and the Starcatcher*. He is a Branford High School Performing Arts alumni who played Dewey Finn in *School of Rock*, Orin Scrivello in *Little Shop of Horrors*, and Ship's Captain in *Anything Goes*. WCSU credits include Matt Drayton/Monsignor Ryan (U/S) in *Guess Who's Coming to Dinner*, Deputy-Governor Danforth (U/S) in *The Crucible*, Ensemble/Callahan (U/S) in *Legally Blonde*, and Ensemble in *Something Rotten!*. Instagram: @thelucasdylanmusic



## WHO'S WHO



### Scott A. Towers

*as Tom Collins*

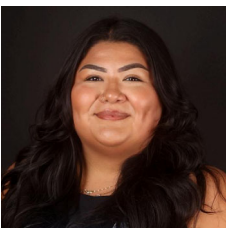
Scott is a Branford native, and the Producer for the BHS Performing Arts' Spring Musicals. Scott obtained his Bachelor of Science in Music Education Voice Concentration from WCSU, where he was classically trained in opera. He has his Master of Science in Higher Education Administration from Post University, and currently works at WCSU. Previous performing credits: Minstrel/Peter Quince – *Something Rotten*, Gaston - *Beauty and the Beast* (Broadway World CT Best Professional Actor in a Supporting Role 2023 Award Winner), Reverend Shaw Moore - *Footloose*, Comfort Counselor - *The 25th Annual Putnam County Spelling Bee*, Roger De Bris - *The Producers*, Corny Collins – *Hairspray*, Tamino - *The Magic Flute*, Rinuccio – Gianni Schicchi, and Frederic – *The Pirates of Penzance*. Scott is thrilled to have been a member of the STC Family from the very start of its creation.



### Kelsey Mulligan

*as Joanne Jefferson*

Kelsey is thrilled to make her *RENT* debut, 25 years after performing "Over the Moon" on this very stage for her freshman choir showcase. A Branford native, Kelsey holds a B.A. in Musical Theatre Performance from Rhode Island College. She has performed throughout Connecticut in such shows as the *25th Annual Putnam County Spelling Bee*, *Songs for a New World*, *Something Rotten*, *Footloose*, *Chicago*, *Hairspray* and *Rocky Horror Show*. She has sung with the legendary Kenny Roger, Tony winner Lillias White and NYC's Broadway Boys. Offstage, Kelsey is an Account Executive at Canusa Hershman Recycling and volunteers at Legacy Theatre.



### Alexandra Hernandez

*as Joanne Jefferson*

Alexandra is debuting in her third production with Shoreline Theatre Company. She is excited to be sharing the role of Joanne for this production. She would like to thank her family and friends for pushing her to do something outside her comfort zone and supporting her through this process. To the cast, crew and production team of *Rent* thank you for all of the laughs and hardworking you've put into this show!



## ADS



## Zoe Johnson



We are so proud of you for continuing to follow your passion. We love watching you perform!

Congratulations on your third performance with Shoreline Theatre Co. We are so proud of you. Never lose your love of music and keep smiling.

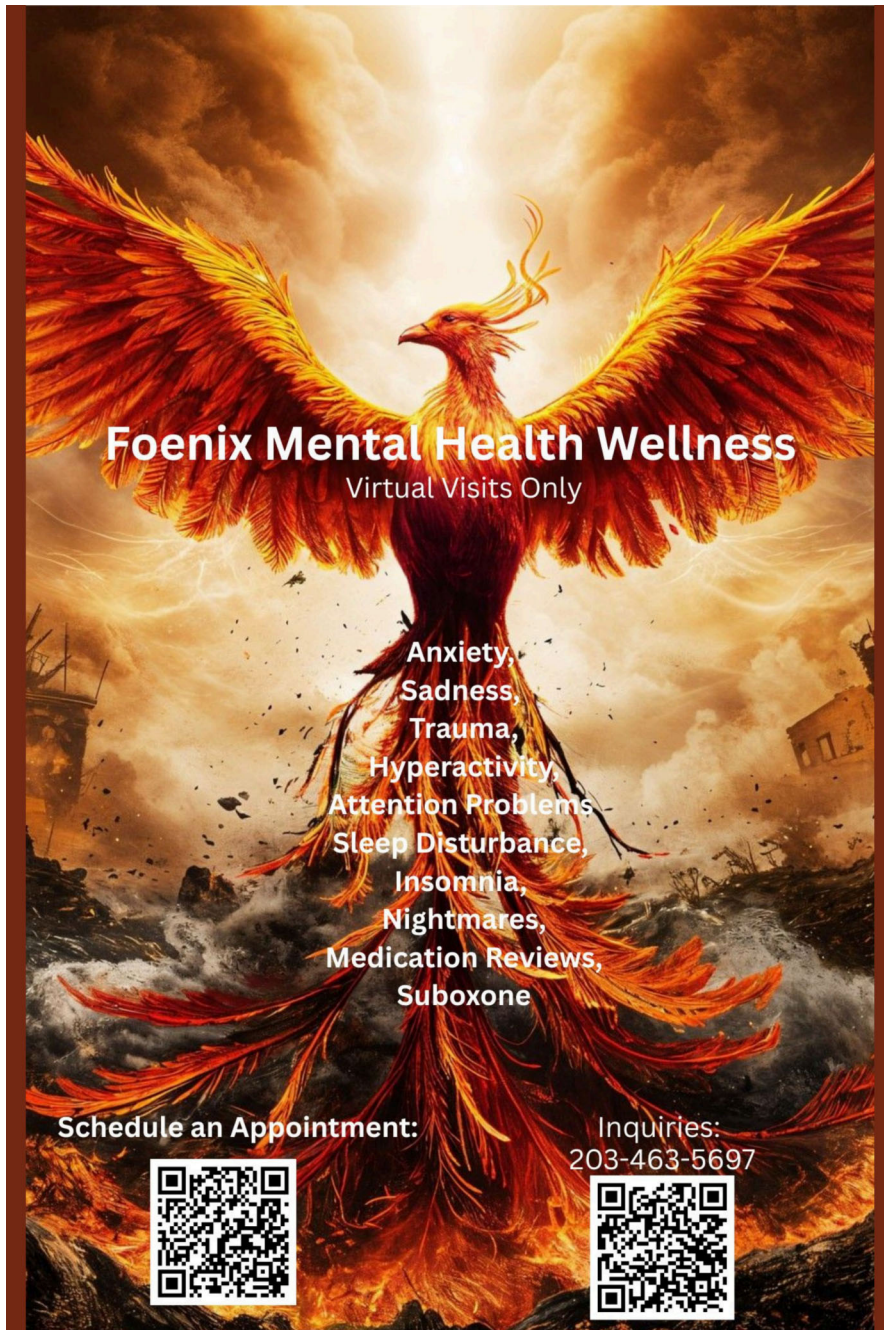
We love You ~ Mom, Dad and Nicholas

**116 Montowese Street, Branford CT**

featuring a large selection of local artisan items  
such as jewelry, candles, local honey, home goods  
and gifts for all occasions




## ADS




**Foenix Mental Health Wellness**  
Virtual Visits Only

Anxiety,  
Sadness,  
Trauma,  
Hyperactivity,  
Attention Problems,  
Sleep Disturbance,  
Insomnia,  
Nightmares,  
Medication Reviews,  
Suboxone

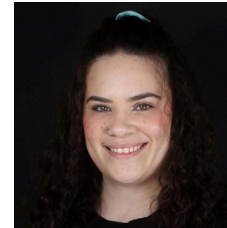
**Schedule an Appointment:**



**Inquiries:**  
203-463-5697



## WHO'S WHO



### Destiny Mea

*as Mimi Marquez*

This is Destiny's first production with Shoreline Theater Company. *RENT* has been a huge part of who she is as a performer. She is incredibly grateful to be able to share this experience with her partner and forever Roger, Tiernan (for a second time!). She would like to thank everyone who supports her on and off the stage. Destiny sends love and thanks to the cast and crew of *RENT*. No Day but Today!



### Epifany Meeks

*as Mimi Marquez*

Epifany Meeks is a dynamic performer who brings energy, heart, and versatility to every stage she steps on. Her favorite past roles include Brooke Wyndham in *Legally Blonde: The Musical*, Tomika Williams in *School of Rock*, Urleen in *Footloose*, and a charitable woman in *A Christmas Carol*, *The Mermaid* in *Sweet Dreams the Musical*.



### Nancy Madonna

*as Maureen Johnson*

Nancy is thrilled to make her Shoreline Theatre Company debut in *RENT* as Maureen on Fridays and in the ensemble on Thursdays. She earned her B.M. in Composition from Berklee College of Music this May and is excited to return to the world of musical theater. Originally from New Jersey, she recently moved to Connecticut with her family, and this production has been a wonderful introduction to her new home! She sends love and thanks to her friends, mom, grandma, and brother for their constant support and encouragement!



### Jacqueline Mate

*as Maureen Johnson*

Jackie holds her BFA in Music Theatre from Elon University and is thrilled to be in her first STC production! Credits: *Beauty & the Beast* (Belle) TYA, *West Side Story* (Maria) TYA, *Head Over Heels* (Philoclea) Elon University, *Into the Woods* (Rapunzel) Elon University, *Cinderella* (Ensemble) Westport Country Playhouse, 54 Below: 54 Sings Demi Lovato, 54 Sings Ariana Grande, 54 Sings Led Zeppelin. Endless love to Mom, Dad, Grammy, Olivia and Chris for supporting her dreams no matter what, to Web, Leo, Theresa and Alyssa for being her best friends, and to the best cast & crew! @jacquelinemate www.jacquelinemate.com



## WHO'S WHO



### Benjamin Ospina

*as Angel Schunard*

Benjamin is thrilled to be making his debut at Shoreline Theatre Company. "After almost 12 years I am returning to the stage, in a role I have always dreamed of playing! I am very excited to be joining this wonderful and talented cast!"



### Jon Firman

*as Mr. Jefferson, Pastor, Homeless Man 1*

Jon is thrilled and excited to be returning to Shoreline Theater Company again this year for our production of Rent! Jon has been a part of this company since its inception. His past roles with the company include *Hairspray* (Wilbur Turnblad), *The Producers* (Mr. Marks/Judge), *The Putnam County 25th Annual Spelling Bee* (Vice Principal Douglas Panch), *Footloose*, (Principal Clark), and *Something Rotten*, (Nostradamus). He always looks forward to this time of year when he gets to come back and be a part of his theater family. Thank you to all the talented performers and directors for allowing him to share the stage with you once again!



### Judy Bannon

*as Mrs. Jefferson, Vendor #2*

Judy is overjoyed to return to this year's Branford Parks & Recreation Shoreline Theatre Company's production. As a member of the *RENT* ensemble, she is grateful to her castmates for their consistent guidance and support as she continues to learn and grow as an actor. Having retired from a 22-year teaching career in North Branford, she now devotes her time to her 7 grandchildren. In addition, she is a member of the North Branford Board of Education and Chairperson of The Democratic Town Committee. Huge thanks to Chris, Mike & Paola for including me in the fun and to all my castmates - Break A Leg - you are an extremely talented group of people and I am honored to work with you! No Day But Today!



## ADS



### AUDITION DATES

JULY 7<sup>TH</sup> AND 8<sup>TH</sup>

6:30-10PM BY APPOINTMENT  
HC WILCOX TECHNICAL HIGH  
SCHOOL - MERIDEN, CT



### SHOW DATES

OCTOBER 3-5 - FOUR SHOWS  
CLINTON TOWN HALL AUDITORIUM  
54 E MAIN STREET  
CLINTON, CT

Thank you -

Dot, Diana, Nicole, Bella, Brendon  
Rose, Derrick, Betsy, Liz, Christina  
Joe, Sara, Kerrie, Dimitri, Kristin  
Sasha, Adam, Deb, Bryn, and Abby!

From the bottom of our hearts,  
thank you for supporting us.  
Without your help we would not  
have been able to reprise these  
roles that mean so much to us!

With love, Destiny and Tiernan



THANK  
YOU!





## ADS

Our family-run business continues to invest daily in order to win your business.  
**WE ALWAYS WANT TO GET TO YES!**

**CAMPUS CUSTOMS**  
SCREEN PRINTING • EMBROIDERY • EVENT MERCHANDISING

**GROW YOUR BUSINESS**

- On-Site Event Merchandising
- Web Stores & Marketing
- Promotional Products

**Full-service facilities in CT & FL, we can fulfill all of your global needs quickly!**

<b>CAMPUS CUSTOMS NEW HAVEN</b> 57 BROADWAY NEW HAVEN, CT 06511	<b>CAMPUS CUSTOMS BRANFORD</b> 184 MAPLE STREET BRANFORD, CONNECTICUT 06405	<b>CAMPUS CUSTOMS FLORIDA</b> 715 BLOOM STREET, SUITE 140 CELEBRATION, FL 34747
---	---	---

**203-789-1608 | TEAM@CAMPUSCUSTOMS.COM**

**CAMPUS CUSTOMS**  
EST. 1975

**ARENA SHOP**

**We work with incredible partners across all industries including professional and collegiate sports teams, university alumni events, bands, festivals, hospitals, hotels, resorts, travel groups, breweries, schools, and more!**











**Congratulations to the cast and crew of *RENT*!**  
**Break a leg!**  
**~ The Campus Customs Team**

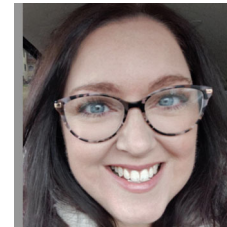
## WHO'S WHO



### Sarah Conti

*as Roger's Mother*

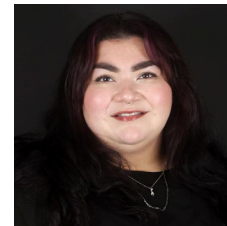
This is Sarah's first STC performance, and she's fully embracing this Season of Love in her life. Her past roles and credits were in another millennium (seriously), so she's especially grateful to STC for welcoming a new face rekindling an old passion. Endless thanks to her family, who have been coaxing a return to the stage for literally decades; to ALO,DPT for keeping the fort running smoothly in their own Vie Bohème; and to her tiniest fan, for reminding her that there's No Day But Today.



### Mandy Sellers

*as Mrs. Cohen*

Mandy is excited for her first stage debut in 24 years and her first production with Shoreline Theatre Company. A proud Branford native, Mandy is thrilled to be back performing and sharing her passion for theatre. Off stage, she enjoys life as a devoted mom to her energetic son, Devin. Balancing rehearsals and motherhood keeps her busy, but she embraces every moment with enthusiasm. Whether she's delivering lines or chasing after a toddler, Mandy approaches each role with joy and dedication. She is grateful for the opportunity to return to the stage and thanks her family and friends for their continued support.



### Marissa S. Nassar

*as Mimi's Mother, Homeless Person 5, Blanket Person*

Marissa is delighted to be making her debut with the Shoreline Theater Company. Recent/Favorite credits include *Return to Woodstock* with 54 Below, *In The Heights* with The Boston Conservatory and *A Funny Thing Happened on the way to the Audition* with WISP Theater Company. She wants to thank her family and friends and her loving husband for always supporting her dreams. "Viva la vie boheme"





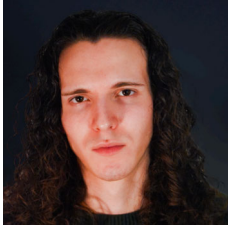
## WHO'S WHO



**Jana O'Donnell**

*as Alexi Darling, Support Group Member*

Jana is a current Branford resident who has been involved in theater productions throughout high school and college. This is Jana's second show with Shoreline Theatre Company after last year's *Something Rotten!*, and she is excited to be back.



**Matthew Romo**

*as The Man*

Matthew is a college student, currently going for his BFA in theater. He would like to thank all of the amazing artists, performers and crew that helped make this show possible.



**David Standrowicz**

*as Thug, Police Officer, Homeless Man 4, Mr. Gray*

David is proud to be performing in *RENT* with Shoreline Theatre Company, one of his favorite musicals of all time. David has previously performed in *Sweeney Todd: The Demon Barber of Fleet Street* (understudy for Judge Turpin), *Chicago* (Sergeant Fogarty), *The 25th Annual Putnam County Spelling Bee*, *Footloose* (Wes Warnicker), and *Something Rotten!* David is a proud alum of Western Connecticut State University and its Kathwari Honors Program, and is excited to begin his graduate program at Southern Connecticut State University in August. He would like to thank his supportive family and friends, Chris Lemiux, Mike Martone, Paola Rarick, and the entire cast of *Rent* for their endless love and support.



## ADS

A theater poster for the production 'Break a Leg'. The top half features a large red curtain on the left and a stylized illustration of two theater masks (one white, one black) on the right. Below the masks, the title 'BREAK A LEG' is written in large, bold, blue capital letters. Underneath the title, it says 'TO THE ENTIRE CAST & CREW @ SHORELINE THEATRE COMPANY!' in smaller blue capital letters. The bottom half of the poster shows a row of red theater seats. At the very bottom, there is a white banner with the text 'Branford' in a large, blue, cursive font, followed by '1145 Main St Branford, CT' in blue capital letters. Below 'Branford' is the text 'BUILDING SUPPLIES' in blue capital letters, followed by a red oval containing 'est. 1937' in white, and finally '203-488-2518' in blue capital letters.

**BREAK  
A LEG**

TO THE ENTIRE  
CAST & CREW @  
SHORELINE THEATRE COMPANY!

**Branford**  
BUILDING SUPPLIES est. 1937 203-488-2518

## ADS



LONG ISLAND  
PLASTIC SURGICAL GROUP, PC  
D.B.A.  
**NEW YORK**  
PLASTIC SURGICAL GROUP

### Anke Ott Young, MD, PhD

*Diplomate, American Board of Plastic Surgery*  
Oncoplastic and Plastic Surgery  
aoyoung@nyplasticsurgical.com

**NYPlasticSurgical.com**

**Congratulations to the cast and crew of  
RENT for all their hard work!**

999 Franklin Ave., Ste. 300  
Garden City, NY 11530  
Tel: 516-742-3404  
Fax: 516-629-3873

Norma F. Pfriem  
Breast Center  
5520 Park Avenue  
Suite 1-500  
Trumbull, CT 06611

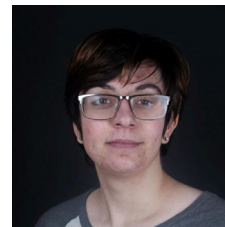
## WHO'S WHO



### Zoe Johnson

*as Thug, Police Officer*

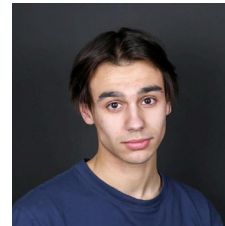
Zoe is thrilled to be performing again with Shoreline Theatre Company. Past productions include *Chicago & Footloose*. She is an alumna of Branford High School, where she performed in "*The Addams Family*" in her senior year. Previously she was a member of the stage crew. Zoe is a local small business owner at Gracious Gifts and Home, a gift shop, in Downtown Branford. In her free time, Zoe loves to read, draw, play video games, and hang with her friends. A special thanks to her good friend, David Standrowicz, who helped Zoe find and rehearse her monologue and record her audition. Lastly, Zoe would like to thank Mike, Colin and Paola for giving her the opportunity to perform again. Break a leg everyone!



### Tori Freeman

*as Vendor #1*

Tori is studying theatre at Plymouth State University. They are honored to again be working with Shoreline Theatre Company. This is their second show with the company. Their previous roles include a Stone in *Eurydice*, Maria in *Twelfth Night*, and an ensemble member in *Something Rotten*. They are very excited to be in this show.



### Alex Lenox

*as Squeegiem*

Alex is a recently graduated senior from Branford High School. He recently appeared as Hal Carter in *Picnic*, Lucas in *The Accepted* and Nigel in *Matilda*. He would like to thank Martone, Colin, Paola, Chris, Adam, Katie, Emma, Dina and everyone else that helped out in making *RENT* possible.



### Lillian Palluzzi

*as Coat Vendor*

Lillian has appeared in many musicals around Connecticut and New York, such as *Chicago* (Class Act New York), *Head Over Heels* (Square Foot Theatre), *Damn Yankees* (The Whitney Players), and *Footloose* (Black Rock Theater). She is currently studying both theatre and dance at Muhlenberg College. She has appeared in departmental productions such as *The Penelopiad* and *In Motion*. She is very excited to be part of her first Shoreline Theater production. She wants to thank her family and Judy Primavera for their never-ending support of her artistic journey.



## WHO'S WHO



**Nicholas Schettino**

*as Homeless Man 2, Support Group Member*

Nicholas is a returning cast member at Shoreline Theatre Company. He's been working with the directing staff ever since his freshman year of high school, and he's loved every show he's had the chance to be part of! Though he may be a homeless man in *RENT*, he'd like to thank his directors and castmates for giving him a home to express his love for theatre through the Shoreline Theatre Company. He dedicates every performance to his biggest supporters: his grandparents, Mom, Dad, and his younger brother Joe.



**Levi Burger**

*as Homeless Man 3, Support Group Member*

Levi is thrilled to perform in another production with Shoreline Theatre Company. He is a rising junior at Western Connecticut State University studying criminology. Levi has performed in STC's past two shows, *Footloose* (2023) and *Something Rotten!* (2024). *RENT* has always been one of his favorite musicals, and he is grateful and excited to be a part of this production. Thank you to all who have offered your support!



**Shay Barrett**

*as Sue, Restaurant Person*

Shay is very excited to be performing in her 3rd STC adult production. She has been performing with STC since she was 11 years old, and is a camp counselor at the STC summer camp. Shay just graduated from Branford Highschool this past month and will be attending UNC Chapel hill for dramatic arts, communications and musical theatre in the fall. Some of her past roles include "Matilda" *Matilda the musical*, "Millie Owen's" *The Picnic*, "Serena" *Legally Blonde*, "Rosalind" *As You Like It*, "Wendy Jo" *Footloose*, and "Summer Hathaway" *School Of Rock*. She would like to thank the creative team and her amazing cast.



## ADS



**No Day But Today.  
Build a Life Worth Protecting.**

[tpaddictiontreatment.com](http://tpaddictiontreatment.com)

189 Orange St. New Haven, CT 06510



## ADS



# CONGRATULATIONS

to Kelsey Mulligan, Chris Lemieux,  
and the cast and crew of  
Shoreline Theater Company's production of





**REPRESENTING ALL  
MAJOR CARRIERS**

- Medicare
- Individual & Small Group Health Life
- Disability
- Long Term Care and more

\*We represent 9 carriers and offer 68 plans in your area. Any information we provide is limited to those plans we do offer in your area. Please contact Medicare.gov or 1-800-MEDICARE to get information on all of your options.\*

**STEVEN P. CUDGMA, CLTC**  
CEO of Shoreline Insurance Services, LLC  
Access Health CT Authorized Broker






**Contact**  
203-433-4969

**556 Main Street**  
Branford, CT 06405

**steven.cudgma@**  
**shorelineinsurancect.com**

**Website**  
**www.shorelineinsurancect.com**

## WHO'S WHO

### Casey Hallock *as Gordon, Homeless Person 6*

Casey is happy to return to the stage with Shoreline Theatre Company. Even with a busy schedule, he does as much as he can to continue to be a part of this wonderful community.

### Laura Melillo *as Homeless Person 7*

Laura is pleased to be performing once again with STC. She previously was part of *Hairspray* (Prudy), *The Producers* (Hold Me, Touch Me), *Peter and The Starcatcher* (Teacher), and *Footloose* (Betty Bramble). Other favorite past roles include Lucy in *Snoopy The Musical*, Blind Old Hag/Ghost of Christmas Future in *A Christmas Carol* (Musical) and Mother Superior in *Nunsense*. Laura acts and is on the Board of Directors of Round Table Players Theater Company. When not onstage, she is Mom to Webster and Ginevra, her two dogs. As always, sending love to Lee Strasberg.

### Tim Fraedrich *as Paul*

Tim is very excited to participate in his second production with Shoreline Theatre Company. He has previously performed in STC's production of *Something Rotten!* (Lord Clapham), and the University of New Haven's production of *25th Annual Putnam County Spelling Bee* (Chip Tolentino). He graduated from UNH this past fall with a B.S. in Computer Science, where he also did work as a Sound Designer and Audio Technician for numerous productions. He is thankful to all of the cast, crew, and directors for all their hard work and support for this production!

### Matthew Law *as Steve*

Matthew is a sophomore at the University of Connecticut where he is majoring in Business Analytics and Information Management. Various Credits: *The Sound of Music* - Broadway National Tour (Kurt), *Legally Blonde* - Branford High School Performing Arts (Emmett), *Rock of Ages* - Kidz Konnection (Franz). When not performing, Matt enjoys playing tennis and is an avid sports fan. "Thank you to Chris, Martone, Paola and Colin for putting on an incredible show once again!"



## WHO'S WHO



### Kaye Desanti

*as Ali*

Kaye is thrilled to be performing in *RENT* with Shoreline Theatre Company. Kaye has been in musical theatre since she was 6 years old. Her first performance was at the Shubert Theatre and her most recent was at Carnegie Hall! She has performed several lead roles, including Star-to-be in *Annie*, Cat in the Hat in *Seussical*, Wednesday in *Addams Family*, and Cassie in *Musical 13*. Kaye has been taking private singing lessons since she was 8 years old. As a soprano I, she enjoys singing operatic songs—some in Italian—and a lot of Broadway musical hits. Kaye is majoring in Voice Performance with a minor in Psychology at Wagner College. She would like to thank everyone at Shoreline, including Colin, Mike, Chris, and Paola, for continuing to teach her the value of hard work and community.



### Alexis Brown

*as Pam*

Alexis is delighted to continue working with the Shoreline Theatre Company in this production of *RENT*. Alexis is a theater program alumni of Branford High School and the University of New Haven and is grateful to continue performing post graduation with the Shoreline Theatre Company. In her most recent performance, she played the role of Olive Ostrovsky with the University of New Haven's production of the *25th Annual Putnam County Spelling Bee*.



### Emma Parker

*as Support Group Member*

Emma is excited to make her Shoreline Theatre Company Debut! She is a recent graduate of the University of New Haven, where she received her B.S. in Criminal Justice. Emma was also lucky enough to be a quarterfinalist of the Irene Ryan Acting Scholarship at the Kennedy Center American College Theater Festival this past January! Previous shows include *The 25th Annual Putnam County Spelling Bee* (Logainne), Chekov's *Three Sisters* (Natasha), and *Godspell*. She would like to shoutout Lexi Brown and Tim Fraedrich, for being the two best friends someone could ever ask for.



## CREW WHO'S WHO



### Matthew Lenox

*Assistant Stage Manager*

Matthew has grown up being on stage in shows and decided to try being backstage! When he is not involved in theater he can be found sewing, crocheting, and designing anything from clothes to nail designs. Matthew is also involved in many clubs at school such as the fall play and spring musical, music makers, BC2M, and Leo club. He will be serving as choir president next year and will be going into his junior year of high school.



### Madison Cook

*Assistant Choreographer*

Madison Cook is a rising college senior at Dean College. This is her second shoreline show after being in Chicago in 2022. This summer Madison is working for Boston Ballet. During the year Madison performs in shows at Dean and teaches dance at local schools nearby. In the fall Madison will be acting as community outreach coordinator and work on producing a show advocating for mental health! She is so excited to see everyone's hard work pay off!



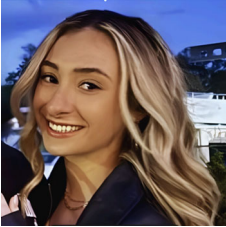
### Colin Sheehan

*Co-Founder/Artistic Director*

Colin serves as the Arts, Culture & Special Events Coordinator for the Town of Branford, Associate Artistic Director at Legacy Theatre & Co-Founder/Co-Artistic Director of Branford Parks & Recreation Shoreline Theatre Company. He graduated from BHS & earned a B.A. in Theatre & Speech Performance from Wagner College. In 2003 he made his Broadway debut in the closing night of *Les Misérables*. Colin has appeared on television and has produced, directed, hosted & performed in the tristate area & abroad with Broadway Cruises, Nickelodeon Cruises, & R Family Vacations Cruises. He is a philanthropist & has hosted, produced & raised funds & awareness for organizations in Branford & beyond. Colin is a former Branford Community Foundation Board Member, Lions Club Member, Beacon Award Winner, Broadway World CT Award Winning Director & Guncle to ClaireBear and Emma Kay! For more information, visit: [ColinSheehanEvents.com](http://ColinSheehanEvents.com).



## CREW WHO'S WHO



### Ariel Cobden

*Assistant Director*

Ariel is thrilled to be working on another Shoreline Theatre Company production! She has been part of STC since the beginning, serving in many roles: assistant director, producer, director of marketing, camp counselor, and more. Ariel would like to thank her family and friends for their endless love and support. She thanks AJ for his unwavering love and encouragement in all that she does. She extends her deepest gratitude to Chris, Martone, Paola, Katie, Adam, and Colin for trusting her with this role and for everything she continues to learn from them. To the cast and crew: "I am SO proud of you and all your hard work and dedication. Thank you for another incredible experience!"



### Katie Spaulding

*Stage Manager*

**KATIE SPAULDING (Stage Manager)** is very excited to be stage managing her third show with Branford Parks & Recreation Shoreline Theatre Company! Katie has been with BP&R STC since the beginning as a Music Director and Head Counselor for the Youth Summer Camps and was also onstage herself in *Hairspray* and *The Producers*. She is so thankful to Mikey, Chris, Paola, Adam, and Ariel for trusting her to take on this role! "Congratulations to the cast and crew of *Rent* on putting together another successful show. This experience with you all has been so much fun!"



### Brendan Krom

*Sound Designer*

Brendan is a BHS alum (2010) who was on the Tech Crew for productions of *Pirates of Penzance* & *Fiddler on the Roof* during his high school years. This marks his 4th show working as the Sound Engineer. He has an Associate of Science in Computer Science Networking & has spent the past 14 years working in IT. "I'm honored to work with such a dedicated & talented cast & crew!"



## WHO'S WHO



### Bella DeSorbo *as Support Group Member, A Girl*

Bella is going into her sophomore year of college at Pace University where she studies psychology. Previous Performing Credits: "Vivienne Kensington" *Legally Blonde* "Patty" *School of Rock*, *Anything Goes*, *Little Shop of Horrors*, *Alice in Wonderland*, "Jack's Mom" *Into the Woods*, *Honk!*, *The Little Mermaid*. She's so happy to be back on stage performing with old and new friends! Bella wishes to thank the hard working cast, crew, and production team for all of their hard work and dedication to the show.



### Italia Bruno

*as Support Group Member*

Italia is a recently graduated senior from Branford High School and is thrilled to be in the ensemble of *RENT*. She performed in the ensemble of *Matilda* and served as dance captain for that show. At BHS, she was also in the ensemble of *Anything Goes*, *School of Rock*, and *Legally Blonde*, where she was dance captain for both. Italia played Christine in *Picnic*, helped choreograph the show, and was part of the stage crew for *The Skin of Our Teeth* and the ensemble of *As You Like It*. She thanks Chris, Martone, Paola, and the entire *RENT* cast and crew for their amazing support.



### Jade Bocciarelli

*as Support Group Member*

Jade is currently a rising junior at Providence College, double majoring in Musical Theatre and Music Education, and minoring in Dance. Recent performances with STC: *Something Rotten!* (Dance Captian), *Footloose*. Other Credits: *The Drowsy Chaperone* (Dance Captian), *Carousel* (Louise), *School of Rock* (Katie), *Anything Goes* (Hope Harcourt).





## CREW WHO'S WHO



**Chris Lemieux**

*Director*

Chris is excited to bring this classic rock-opera to the Shoreline community. A Branford Public Schools graduate, he earned his BFA in Acting from Pace University and is a proud member of Actor's Equity Association. Directorial credits for STC include *Peter and the Starcatcher*, *Spelling Bee*, *Puffs*, and the youth summer camps. He also directs the spring musical at Walsh Intermediate School. As an actor, he has appeared in STC's *The Producers*, *Chicago*, and *Something Rotten*. At Legacy Theatre he was seen in *Play That Goes Wrong*, *You're a Good Man Charlie Brown*, and *Christmas Carol*. Chris is one of the co-founders of Bardico Creative—a company dedicated to producing new works for the stage, screen, and podcasts. His latest project is a darkly comedic audio drama using Dungeons and Dragons. "This one is for Nico. Love you bud."



**Mike Martone Jr.**

*Musical Director, Set Designer, Co-Founder/Artistic Director*

Mike graduated from Branford High School in 2001 where he once was fortunate to grace this very stage as a cast and pit member. He attended Western Connecticut State University where he obtained his Bachelor of Science in Music education. Mike performed in several opera's as a member of the WCSU Opera Ensemble. Mr. Martone graduated with high honors and was awarded the Ruth P. DeVillafranca Certificate, which is given to the most promising music educator as deemed by the music faculty. He also has his Masters of Science in Music Education from WCSU, again graduating Magna Cum Laude. As a founding member of the Shoreline Theatre Company along with Colin Sheehan, they have brought the local communities the opportunity to learn musical theater and continue that passion well into adulthood.



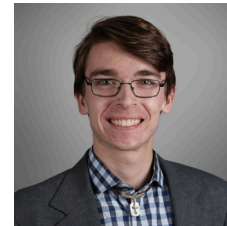
## CREW WHO'S WHO



**Paola Rarick**

*Choreographer*

Paola is thrilled to be a part of the creative team at Shoreline Theatre Company. She has been co-owner of StudioOne Dance Center in Branford for the past 16years. Aside from teaching and operating her studio, Paola has choreographed numerous musical theatre productions such as *Chicago*, *Beauty and the Beast*, and *Something Rotten*. She has served as choreographer at Artful Living Production, Walsh Intermediate School, Branford High school and Legacy Theater. You can see more of her work at the Legacy Theater this summer where she will choreograph *Sweeney Todd*. Paola received a B.S. in Corporate Communications at SCSU. She resides in Branford with her husband Bill and her daughter Bella lives in NYC as she finishes her BM in Musical Theater



**Adam Jackson**

*Technical Director/Lighting Designer*

Adam is excited to continue working with the STC team! He has worked on many productions as an actor and designer. Adam has done technical theatre design work for The Legacy Theatre, Walsh Intermediate School, the Branford High School Fall Play & Spring Musical, Ivoryton Playhouse, WCSU Opera, Elm Shakespeare Company, and Seven Angels Theatre. Adam graduated from Western Connecticut State University with a BS in Music Education. He is currently the Director of Bands at Stamford High School, where he also conducts the pit orchestra for the Strawberry Hill Players. He is also a musician and lighting designer at Elevate Life Church in Wallingford.

