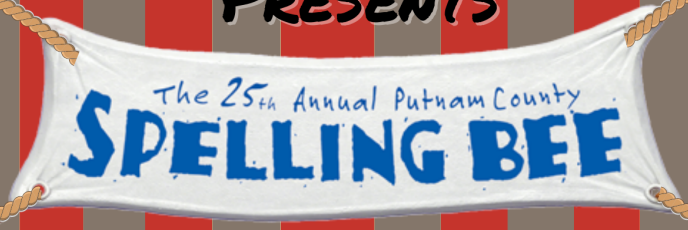





BRANFORD PARKS + RECREATION
SHORELINE THEATRE COMPANY

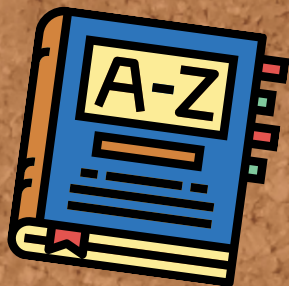
PRESENTS



The 25th Annual Putnam County
SPELLING BEE



July 8th @ 7:30,
July 9th @ 2:00 & 7:30
WALSH INTERMEDIATE SCHOOL AUDITORIUM





**Thank you to our DIAMOND
sponsor for your constant
support of the arts in our
community!!!**



BRANFORD

Community Foundation

www.BranfordCommunityFoundation.org

MUSICAL NUMBERS

1. The 25th Annual Putnam County Spelling Bee
2. The Rules
3. My Friend The Dictionary
4. Pandemonium
5. I'm Not That Smart
6. Magic Foot
7. Magic Foot Playoff
8. Pandemonium (Reprise)
9. Chip Goodbye
10. Rona Moment #2
11. Prayer Of The Comfort Counselor
12. Chip's Lament
13. Woe Is Me
14. I Am Not That Smart (Reprise)
15. I Speak Six Languages
16. The I Love You Song
17. Woe Is Me (Reprise)
18. Rona Moment #3
19. Second - Champion
20. Epilogues
21. Finale
22. Bows

STARRING

RONA LISA PERETTI - KELSEY MULLIGAN

VICE PRINCIPAL PANCH - JOHN FIRMAN

OLIVE - JULY ROCHE

BARFEE/CARL DAD - MIKE MARTONE JR.

LOGAINNE (SCHWARTZY) - KATE STANGO

CHIP - DAN FRYE

MARCY PARK - HANNAH KUPSON

CONEYBEAR - ROB LUCE

MITCH MAHONEY/DAN DAD/OLIVE'S DAD- SCOTT A. TOWERS

JANITOR/JESUS/LEAF'S DAD - DAVID STANDROWICZ



CREATIVE TEAM

Director

Christopher Lemieux

Musical Director

Kevin Buno

Choreographer

Sophia Coppola

Set Designer/Props

Mike Martone Jr.

Stage Manager

Denis Ramic

Technical Director/Designer

Adam Jackson

Producer/Digital Media

Ariel Kathryn Cobden

Co-Founder

Mike Martone Jr.

Co-Founder

Colin Sheehan





July Roche (Olive Ostrovsky). This is July's first show with Shoreline Theatre Company. She has been performing for 12 years. Some of her past roles have been Into the Woods(The Witch), Legally Blonde(Brooke Wyndham), and Mamma Mia!(Tanya). She will be attending the University of New Hampshire to study music education this fall. She hopes you enjoy the show!

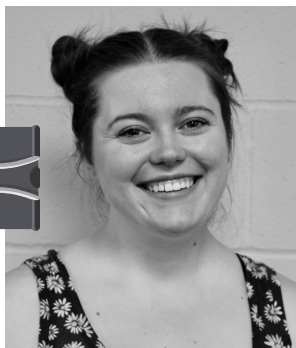


Mike Martone Jr. (Co-Founder, Musical Director, Set Designer/Construction) graduated from Branford High School in 2001 where he once was fortunate to grace this very stage as a cast and pit member. He attended Western Connecticut State University where he obtained his Bachelor of Science in Music education. Mike performed in several opera's as a member of the WCSU Opera Ensemble. Credits include; Tamino in The Magic Flute, Don Basilio in The Marriage of Figaro, King Kasper in Amahl and the Night Visitors, as well as several others. Mr. Martone graduated with high honors and was awarded the Ruth P. DeVillafranca Certificate, which is given to the most promising music educator as deemed by the music faculty. He also has his Masters of Science in Music Education from WCSU, again graduating Magna Cum Laude. As a founding member of the Shoreline Theatre Company along with Colin Sheehan, they have brought the local communities the opportunity to learn musical theater and continue that passion well into adulthood.



Kelsey Mulligan (Rona Lisa Peretti) was last seen on the STC stage in Chicago (Pop). A Branford native, Kelsey graduated from BHS in 2002 and received a BA in Musical Theatre Performance from Rhode Island College in 2006. Her other favorite shows include Anything Goes(Reno Sweeny), Hairspray (Velma Von Tussle), The Full Monty(Georgiel), Sweet Charity(Nickiel), Rocky Horror Show(Magenta) and The Who's Tommy(The Gypsy). Kelsey has performed at the Ivortyton Playhouse and sung with NYC's The Broadway Boys, Tony Award winner, Lillias White and country music legend, Kenny Rogers. She also lends her voice at various events throughout Connecticut, most recently with Fuse Theatre of CT. Off stage, Kelsey has worked as an Account Executive at Canusa Hershman Recycling for 15 years and is an Usher and House Manager at the Legacy Theatre. "Congrats to the amazing cast, orchestra and crew!"





Kate Stango (Logainne Schwartzandgrubenniere) is super pumped to be in her first show with Shoreline Theatre Company! By day, she is an Admissions Counselor at the University of Connecticut, where she graduated from in 2020 with a degree in Political Science and Psychology. She is so excited to be in Spelling Bee again after playing the role of Olive several years ago. Other favorite roles of hers include Almost (Marvalyn and Hope) Addams Family (Alice Beineke), and Cabaret (Fraulein Schneider). She would like to thank everyone involved in this production for being so welcoming, her family for their everlasting support, and her incredible partner Sam for pretty much everything ever. She hopes you enjoy your time in Putnam County!



Hannah Kupson (Marcy Park) is thrilled to be taking part in her first Shoreline Theatre Company production! Her favorite past roles include the Euridyce (Little Stone), Little Shop of Horrors (Audrey), and Staged Reading of Cabaret (Fräulein Kost). She is currently studying Theatre and English at Suffolk University, where she will be making her playwriting and directorial debut in the fall! She would like to thank her friends and family for their love and support, and her cast for being so lovely to work with.



Rob Luce (Leaf Coneybear) is excited to be back performing with Branford Parks and Recreation Shoreline Theatre Company. He graduated from Branford High School in 2003 and continued his studies, earning a Bachelor's Degree in Biology from UCONN and Master's Degree in Education from the University of New Haven. His most recent productions include Peter and the Starcatcher (Lord Leonard Aster) and The Producers (various characters). He currently works at General Dynamics Electric Boat. He is thrilled to be working with such a talented cast and crew on this show and can't wait to be apart of future shows with STC!





Jon Firman (Vice Principal Douglas Panch) is thrilled to be participating in Shoreline Theater Company's production of The 25th Annual Putnam County Spelling Bee, playing the role of Vice Principal Douglas Panch. Jon is not a native of Branford - he originally hails from East Lyme, CT, and currently is living in Trumbull and working as a high school science teacher in Bethel CT. He became involved with Branford when he was hired by the high school as an instructor for the school's (then new) marching band program, with whom he still works today. When Shoreline Theater Company was created some years later, Jon enthusiastically joined, and has never looked back. His past performances with the company include Hairspray, (Wilbur Turnblad), and The Producers, (Mr. Marks/Judge/Ensemble). He has enjoyed his experience so much that he often participates in his own high school's plays as a guest actor, having appeared in Bethel High School's productions of Footloose, (Principal Clark), and The Drowsy Chaperone, (the Superintendent). Jon is so excited to once again take the stage with Shoreline Theater Company, and is honored to work with such talented fellow actors, directors, staff, and crew to make this production come to life - thank you so much to you all for letting him be a part of it with you!



Dan Frye (Chip Tolentino) is a Branford local returning to the town stage after a seven year hiatus. In the interim, he attended college in South Dakota, where he graduated with a BFA in Acting, and lived a year in Santa Fe. Some of his acting exploits in that time included a smorgasbord of university theatrical runs, notably Into the Woods (The Baker), Love's Labour's Lost (Berowne), and Three Sisters (Tuzenbach), as well as roles in a credit union commercial, a cabaret of 70s songs, a student film, a punk music video, and an improv murder mystery dinner theater. When not performing, Dan enjoys writing about history, designing tattoos, shooting arrows, training in German longsword, and hiking through the woods. He is beyond thrilled for the opportunity to perform again in his hometown with such a talented cast and crew.



David Standrowicz (Janitor/Jesus) of Guilford, Connecticut is ecstatic to be performing in his sixth musical production and his second production with Shoreline Theater Company. He is an alum of Western Connecticut State University and has been involved with theater since he was a freshman in high school. At Western, David was a proud member of the Kathwari Honors Program and Western's Play It by Ear Acapella. He has performed in productions such as All Shook Up, Fiddler on the Roof, Sweeney Todd: The Demon Barber of Fleet Street, and most recently, Chicago. David would like to thank his family, friends, and Shoreline Theater Company for their support and encouragement.





Scott A. Towers (Mitch Mahoney) is a Branford resident who is and original member of the Branford Parks & Rec. Shoreline Theatre Company. His previous BP&RSTC credits include, "The Producers" (Roger De Bris) and "Hairspray" (Corny Collins). Scott graduated BHS in 2006 where he performed in "Beauty and the Beast" (Beast). He earned his Bachelor's of Science in Music Education from Western Connecticut State University in 2011 alongside Mike Martone Jr.. Scott went on to obtain his Master of Science in Higher Education Administration from Post University in 2018. He now serves as Producer for the BHS Performing Arts Program and works fulltime at WCSU. Other performing credits include: "The Magic Flute" (Taminol), "Gianni Schicchi" (Rinuccio), "The Pirates of Penzance" (Frederic), "Amahl and the Night Visitors" (Kaspar) and "Godspell" (Lamar). "I would like to thank my wonderful friends who continue to work so hard to keep live theater in Branford alive and well!"



Christopher Lemieux (Director) is an actor, director, and writer based on the Shoreline. A Branford native, Chris graduated from BHS and went on to major in BFA Acting at Pace University. Chris directs the Shoreline Theatre Company junior productions and directed "Peter and the Star Catcher" for the company in the Fall of 2019. He will be directing "Puffs : or Seven Increasingly Eventful Years at a Certain School of Magic and Magic" this coming fall of 2022. As an actor, he is a proud member of the Actor's Equity Association and has performed in a variety of productions from the east to west coast. He is gearing up to perform in the Legacy Theatre's production of "You're a Good Man, Charlie Brown" as Charlie Brown this coming August. He is thankful to Martone and Colin for giving him the opportunity to direct this show for the company and incredibly grateful to Soph, Denis, Ariel, Adam and everybody else who made this production a success. He wishes to give a special shout-out to Kevin Buno, the music director of this production, who was Chris's very first music director in WIS, where Chris attended middle school. Chris is so excited to be working with a person who helped him grow into the performer he is today.

Kevin Buno (Musical Director) is delighted to work with the extraordinary cast, crew, and production staff of Spelling Bee. Kevin began his teaching career twenty years ago as a music educator in Massachusetts. A year later, he moved back to Connecticut and began teaching music at Walsh Intermediate School (WIS). While at WIS, he served as musical director for many shows in this very space, pre-renovation. Following his time in Branford, Mr. Buno served as the Director of Choirs at Guilford High School, Music Coordinator for Fairfield Public Schools, and Director of Music for St. George Church (Guilford). He is currently an Assistant Principal at Guilford High School. In Guilford, Mr. Buno collaborated with his friend and colleague, Cara Mulqueen-Teasdale, on several Guilford High School Theatre Arts productions including, Evita, The 25th Annual Putnam County Spelling Bee, All Shook Up, Fiddler on the Roof, West Side Story, Sweeney Todd, School of Rock, and Anything Goes. In 2017, the CT High School Musical Theater Awards honored Mr. Buno with "Outstanding Musical Direction" for his work on Sweeney Todd. Kevin's choral groups have had the honor to perform with CONCORA, UCONN Chamber Singers, the Yale Whiffenpoofs, & New Haven Symphony Orchestra. Additionally, he has led the Guilford High School Choirs on several concert tours including performances in Washington D.C., New Orleans, San Francisco, and Ireland. Kevin has served as president for the CT Chapter of American Choral Directors Association and chair for the CT Music Educators Association. He has been a visiting professor of choral music at Eastern Connecticut State University and an invited guest conductor/clinician for several organizations and festivals. He holds degrees in Music from The College of St. Rose and University of Connecticut and a sixth year degree in Educational Leadership from the University of Connecticut. He wishes to extend his gratitude and love to Will, his family, and all involved with this production. He's especially grateful to director and former student, Chris Lemieux, for his vision and leadership during this process. BRAVO to you, Chris!

Sophia Coppola (Choreographer) is ecstatic to be choreographing her first adult production with Branford Park and Recreation's STC. Since STC's beginning she has been the choreographer for the Jr. shows. She has also been in STC's shows since the beginning, playing in the Hairspray and The Producers (as ensemble) and Chicago (as Roxie Hart). In her high school career, she was in Shrek (Fiona/Baby Bear), The Addams Family (Wednesday Sweeney Todd/Mrs. Lovett). She also recently performed in Antigone (Ismene) at SCSU. She is entering her sophomore year at SCSU, and loves to read and write. She is extremely proud of this team for putting this show on so quickly. "Break a leg everyone!"

Denis Ramic (Stage Manager) is a BHS alumnus who is soon beginning his sophomore year at the University of Connecticut pursuing a degree in business management. This is Denis' 14th show and he will be acting as one of the deck chiefs backstage. As always he is extremely excited to help put up an amazing show and can't wait to see the stage full of entertainment on opening night.

Adam Jackson (Technical Director) is excited to continue working with Shoreline Theatre Company this season! Adam has been involved in over 40 productions both onstage and off. Adam has most enjoyed portraying his roles in Titanic (J. Bruce Ismay '17), The Night Thoreau Spent in Jail (Henry David Thoreau '17), Shrek (Farquaad '18), A Christmas Carol (Ebenezer Scrooge '18), and The Addams Family (Lucas Beineke and Gomez Addams - understudy, performed '19). Adam was head stage manager for STC's Inaugural Season and has continued to work with them in the areas of lighting and sound design and technical direction. He also works as a sound designer at the Legacy Theatre in Branford and The River Church in Danbury. Adam is a senior at Western Connecticut State University studying Music Education with a concentration in classical trombone. He works on the WCSU Music Department's student crew helping to plan and run events. Adam also produces his own projects, which in the past have included recording a barbershop album, organizing several big band recording sessions, and planning a live concert in Branford which included the performances of 30+ musicians from all over Connecticut.

Ariel Kathryn Cobden (Producer, Digital Media) is thrilled to be working on another BP&R Shoreline Theatre Company production. She also enjoys working with BHS Performing Arts and Branford Parks and Rec. Past credits include, *Anything Goes*(Student Director), *Elf Jr*(Co-director), *HSM 1 & 2* (Producer), *Little Shop Of Horrors*(Student Director), *Sweeney Todd*(Student Director), *STC Christmas Short Film*(Producer), *Frozen Jr*(Assistant Director), *Annie Jr*(stage manager), *Peter and The Starcatcher*(assistant director and stage manager) and many more! She also helps to create and produce publicity and creative projects for Branford Parks and Recreation Department. She also will be working on BP&R Shoreline Theatre Company's production of *Wizard of Oz* this summer!! Next year, Ariel will be studying Industrial and Organizational Psychology with a minor in the Arts, at Valencia College, a part of the University of Central FL direct connection program! She would like to congratulate the cast on an amazing production, and wish them all of the luck and love!

Colin Sheehan (Co-Founder) is a local arts enthusiast and serves as the Arts, Culture & Special Events Coordinator for the Town of Branford, Producer of the Broadway Spotlight Series & Community Arts Coordinator at Legacy Theatre, Director of The Branford High School Performing Arts' Spring Musical, and Co-Founder and Co-Artistic Director of Branford Parks and Recreation Shoreline Theatre Company. He graduated from Branford High School and continued his studies at Wagner College with a B.A. in Theatre and Speech Performance. In 2003, he made his Broadway debut in the closing night production of *Les Misérables*. In '99, Colin appeared numerous times on *The Rosie O'Donnell Show* and worked for three seasons on *The Wendy Williams Show*. Colin has produced, directed, hosted, and performed in the tri-state area and abroad with *Broadway Cruises*, *Nickelodeon Cruises*, and *R Family Vacations Cruises*. Colin is a philanthropist and has hosted, produced and raised funds and awareness for many organizations in Branford and beyond. For more information, visit ColinSheehanEvents.com.





La Cucina

Prepared Meals & Catering

From our kitchen to your table

Locations: North Branford, Guilford & Cheshire

WWW.Lacucinapreparedmeals.com

GBW&R

GRANITE BAY WOODWORKS & REMODELING

Granitebaywoodworks.com

Tel: 203-988-2268

TOP NOTCH HAIR DESIGNS

Specializing in Men's and Women's cutting,
coloring, and highlighting

203-481-3174

225 Montowese St.

Branford, CT 06405

Katie Hainsworth Westrin
Katie.Westrin@raveis.com
c: 203.509.3619



HAINSWORTH

Team at William Raveis Real Estate

Success you can count on!

Hainsworth.raveis.com
1080 Main Street · Branford · CT 06405

TYCO
making *print* happen

New Haven
296 Elm Street • 203.777.TYCO

Online 24/7
www.TycoPrint.com • [social icons]

Branford
618 Main Street • 203.481.TYCO

BREAKFAST SERVED ALL DAY

PARTHENON DINER
BRANFORD | OLD SAYBROOK

Branford
374 East Main Street
203-481-0333

Old Saybrook
809 Boston Post Road
860-395-5111

Take-out or Delivery Available
ORDER ONLINE AT PARTHENONDINER.COM

Home Remodeling • New Construction

Mike Martone:
203-361-8777

Jaime Martone:
203-710-7630

Majestic
BUILDERS

Your Home is Your Castle

Residential & Commercial

licensed & insured, LLP - Lic # 0647738

CAMPUS
CUSTOMS
BRANFORD

Screen Printing. Embroidery. Promotional Products. Web Stores. Events.

SHORELINE INSURANCE --- SERVICES INC

Branford's Local Medicare & Health Care Specialist

556 Main Street, Branford, CT 06405

203-433-4969

www.shorelineinsurancect.com

Medicare – Individual and Small Group Health Plans - Life – Disability – Long Term Care

Representing all the major carriers – Access Health CT Authorized Broker



Steven P Cudgma, CLTC

steven.cudgma@shorelineinsurancect.com

**Don't be confused by
Medicare television
ads.**

**Call Steve for the
straight answers!!**

BREAK A LEG TO THE CAST AND CREW

Of the Shoreline Theater Company's

25th Annual Putnam County Spelling Bee

CONGRATULATIONS!!

Special Thanks

North Branford Barber Shop

Nora Longway

Nick Colombo

Sibel Iljazi

Jesse White

Branford Public Schools

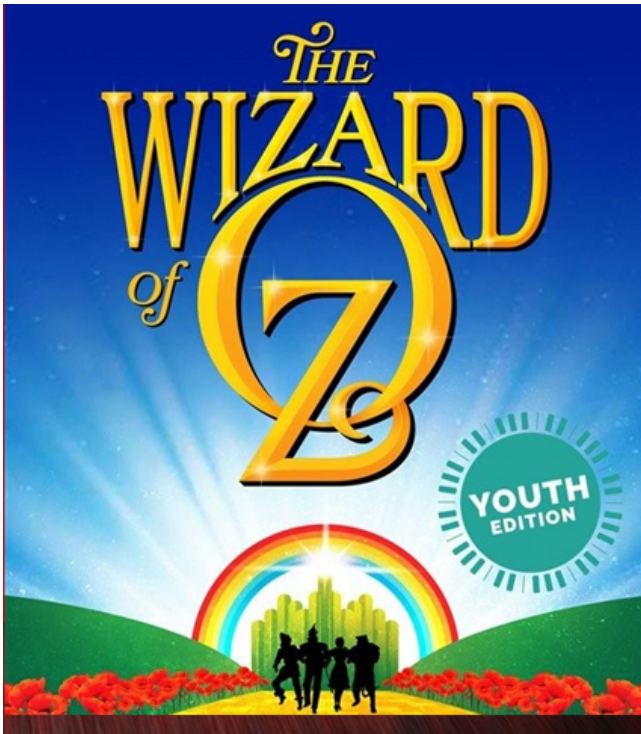
Joe Carbone & BPS Custodial Staff

Branford Parks & Recreation Dept.



BRANFORD PARKS AND RECREATION

SHORELINE
THEATRE COMPANY



July 27th & 28th

For more information visit: ShorelineTheatreCompany.com

&

For tickets visit: BranfordRecreation.org

Or call: 203-488-8304